



GMT MONTHLY MEMBERSHIP PROGRESS REPORT

Results as of: 4/30/2017

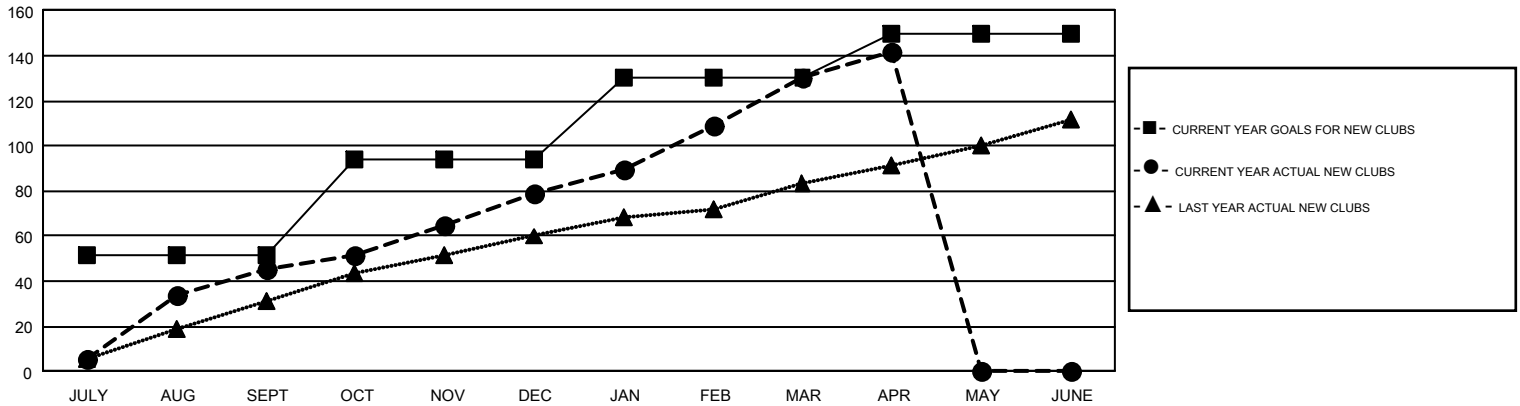
GMT Constitutional Area 6, Group C

GMT: ER GURUNATHAN

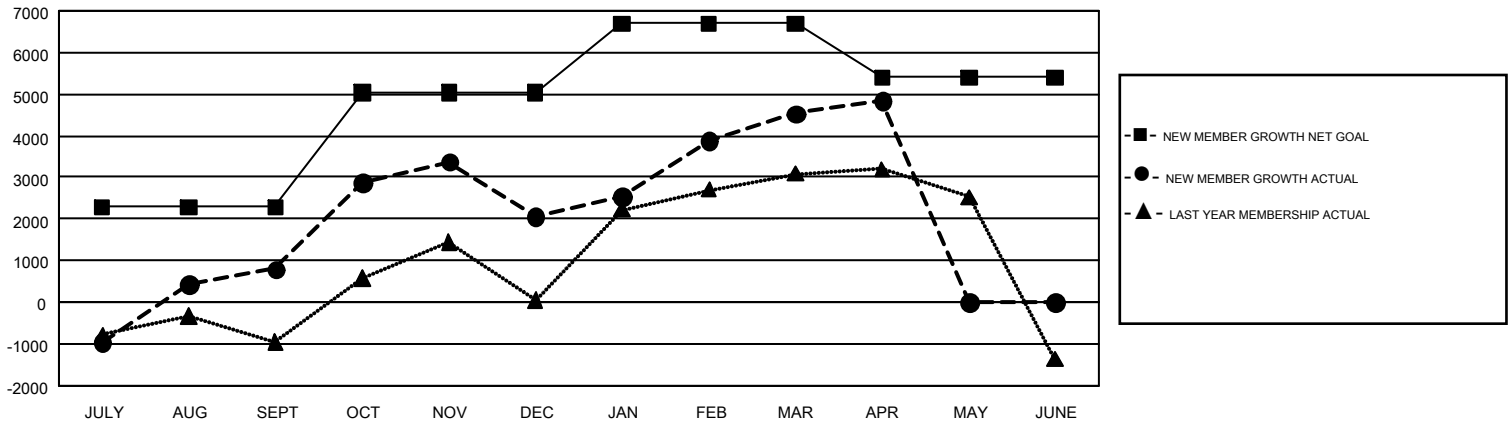
REPORT DOES NOT INCLUDE CLUBS IN UNDISTRICTED AREAS.

Clubs				Members			
RESULTS FOR 2016-2017				RESULTS FOR 2016-2017			
QUARTER	NEW CLUB GOAL	NEW CLUBS	DROPPED CLUBS	QUARTER	NEW MEMBER GROWTH NET GOAL (not reinstated or transfers)	NEW MEMBER GROWTH ACTUAL (not reinstated or transfers)	DROPPED MEMBERS ACTUAL (including transfers)
JULY/AUG/SEPT	52	45	23	JULY/AUG/SEPT	2,289	5,644	4,847
OCT/NOV/DEC	42	34	54	OCT/NOV/DEC	2,746	4,177	2,921
JAN/FEB/MAR	36	51	22	JAN/FEB/MAR	1,662	4,294	1,814
APR/MAY/JUNE	20	12	4	APR/MAY/JUNE	-1,302	820	504

GOALS AND ACTUAL NEW CLUBS CUMULATIVE



GOALS AND ACTUAL MEMBERS CUMULATIVE



DROPPED CLUBS: 103	1,761 CLUBS OF 2,289 ADDED 1 OR MORE NEW MEMBERS	GENDER DISTRIBUTION MALE 70,618 (80.73%) FEMALE 16,856 (19.27%)
DROPPED MEMBERS DECEASED 216 CLUB CANCELLED 2,193 OTHER 7,677 <hr/> TOTAL 10,086	CLICK HERE FOR CUMULATIVE MEMBERSHIP DATA	TOTAL FAMILY UNIT MEMBERS 30,567 FAMILY MEMBERS PAYING HALF DUES 17,990